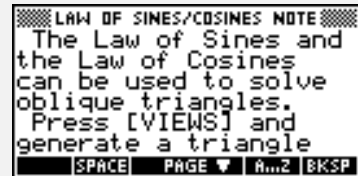


Objectives:

Using the **LAW OF SINES/COSINES** applet, the student will solve oblique triangles by applying the laws of sines and cosines.

Functionality:

When the student presses **START**, the **LAW OF SINES/COSINES NOTE** will be displayed.



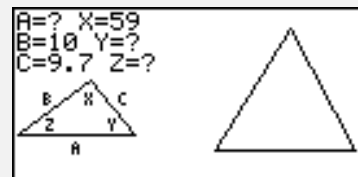
After reading the note, the student should view the **SKETCH** for further explanation.



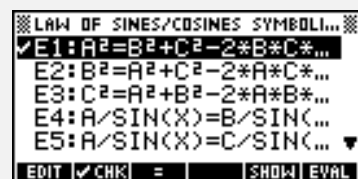
VIEWS will allow the student to select a new problem, solve the given triangle, or view the current problem.



New Triangle will display an oblique triangle with three defined measurements. The diagram in the left bottom corner is for reference. For example, side A is always the base and $\angle X$ is always opposite side A.



Solve Triangle takes the student to the **LAW OF SINES/COSINES SYMBOLIC VIEW**. The student should check the appropriate equation to be solved.



When the equation is checked, press **NUM** to see the **RIGHT TRIANGLES NUMERIC VIEW**. Enter the given information in the numeric view. Highlight the unknown, and press **SOLVE**.

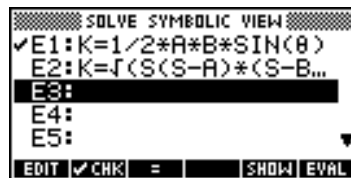
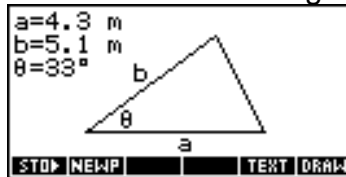


To return to the symbolic view, press **SYMB** .
To view the problem, select **See Triangle** from the views menu.

Additional Exploration:

Use the **Solve** applet to solve for the area of oblique triangles. Enter the formulas in the symbolic view, press **NUM** to enter the known values, highlight the unknown value and press **Solve** . An example would be:

Find the area of the following triangle:



Ideas can be applied to:
Trigonometry, Precalculus, Physics

Programs associated with this applet:
.LSC.NT, .LSC.SO, .LSC.SE, .LSC.SV