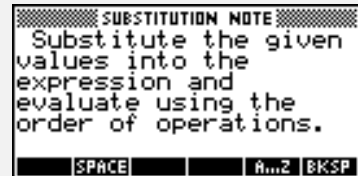


Objectives:

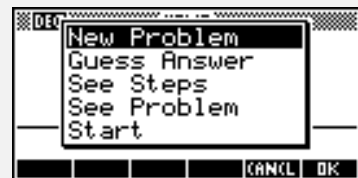
Using the **SUBSTITUTION** applet, the student will evaluate expressions when given values for the variables.

Functionality:

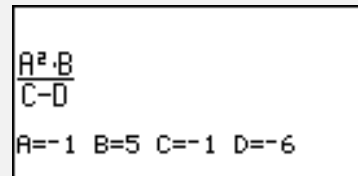
When the student presses **START**, the **SUBSTITUTION NOTE** will be displayed.



VIEWS allows the student to select a new problem, guess the answer, see the steps involved in solving the problem, and view the problem if needed.



New Problem displays a variable expression with randomly generated values to be substituted.



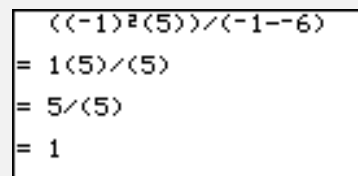
Guess Answer prompts the student to enter the value of the evaluated expression.



A message box is then displayed to provide the student with feedback about the correctness of the entry.



See Steps will display the process necessary to evaluate the expression. The screen is frozen between steps; press any key to continue to the next step.



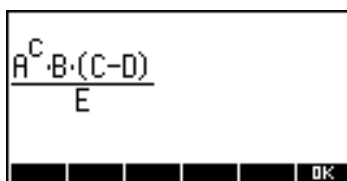
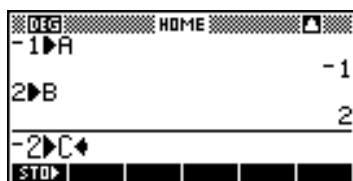
See Problem will display the current expression.

$$\frac{A^2 \cdot B}{C - D}$$

A=-1 B=5 C=-1 D=-6

Additional Exploration:

From the **HOME** screen, evaluate the following expression given A=-1, B=2, C=-2, D=3, and E=-5. (Highlight the expression and press **SHOW** to see the expression in algebraic form.)



Ideas can be applied to:

Prealgebra, Algebra I, Algebra II

Programs associated with this applet:

.SB.NP, .SB.GA, .SB.SHO, .SB.SEE, .SB.SB