

Program name: **FORMO_2KX**

Release: 04-Oct-2006

Previous Version: **FORMO V9.75+**

Platforms: **Only** for HP49G+ & HP50G.

Type: **Library**.

Library ID number: **1010**

Size on the calculator: **31613** Kb.

Author: Dante Camargo.

Universidad Michoacana de San Nicolás de Hidalgo (Civil Engineering).

Morelia Michoacán, México.

E-Mail: dante_cs@yahoo.com

FORMO_2KX



FORMO_2KX is freeware... and it works in both modes: **RPN** and **ALGEBRAIC** mode. Please install the appropriate version in the appropriate hardware. FormoV9.74 was intended for the HP49G, while Formo V9.75+ & Formo_2KX were intended to work only on the HP49G+ & the HP50G. (Make sure to install the right version on the right calculator, Formo V9.75+ and Formo_2KX will not work on the HP49G.)

What is FORMO_2KX? It is a program that helps you to: browse, create, store, evaluate, erase, move, copy, modify, rename, arrange, backup, restore and share your formulas (equations), in your HP49G+ or HP50G all within an easy and friendly user environment. It includes auto-help and it was made 98% in UserRPL language and 2% in SystemRPL.

FORMO_2KX is also faster and has more options than the previous versions.

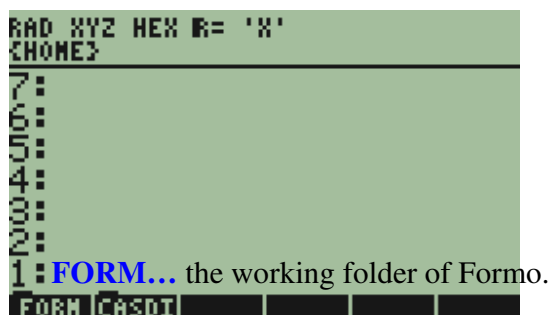
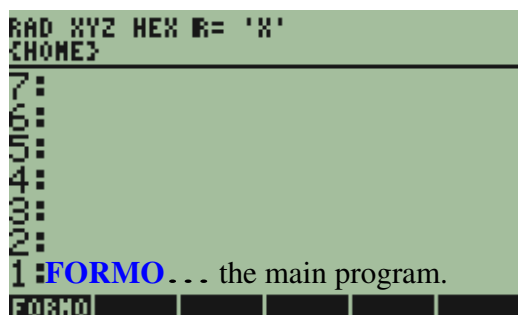
Recently I made a few little improvements to it, **FORMO_2KX** is now animated and I believe this will probably be the final version, unless I decide to re-write it 100% in SystemRPL (maybe some day...).

An important point in **FORMO_2KX** is that it doesn't just store formulas anywhere, but it'll ask you for a directory to save them, so you'll keep your stuff more organized (*I hate a messy calculator*). It also allows you to send formulas or directories to another calculator.

When deleting formulas or directories **FORMO_2KX** will ask you for a confirmation in order to prevent erasing any important information by mistake, all this among many other new features.

FIRST TIME USE INSTRUCTIONS.

After you have installed the Library... you will only see **1** element in the soft menu area, which is Formo the main program...



When you run **FORMO_2KX** for the first time, it creates a Folder (directory) called: **FORM** in your HOME menu... which you can see by pressing your **VARs** key, I recommend not purging this directory because **FORMO_2KX** was designed to retrieve it. Perhaps you might have to get familiar with this directory because as long as you use **FORMO_2KX** the **FORM** directory must always be there.

You can delete it though... **FORMO_2KX** will create it as many times as it is deleted. If you delete it by mistake I hope you have used the "BACKUPS" option previously... otherwise you just lost all your formulas permanently.

Also when you run Formo for the first time, it will check for backups (made by the user)... since this is the first time you run it obviously you don't have one, so you will answer no to that question on the screen. This will happen every time you start Formo and you don't have yet a backup in port 2... so to avoid this to happen I recommend to make a backup as soon as you feel you got enough formulas to save, it could be just one formula or a thousand it doesn't matter, Formo will generate a backup in port 2 and you will not be asked again.

BROWSING FORMULAS & FOLDERS.

From the main menu of **FORMO_2KX**, now we have the "browser" sub-menu, which wasn't available on previous versions. Within this Sub-menu we will see 3 choices:

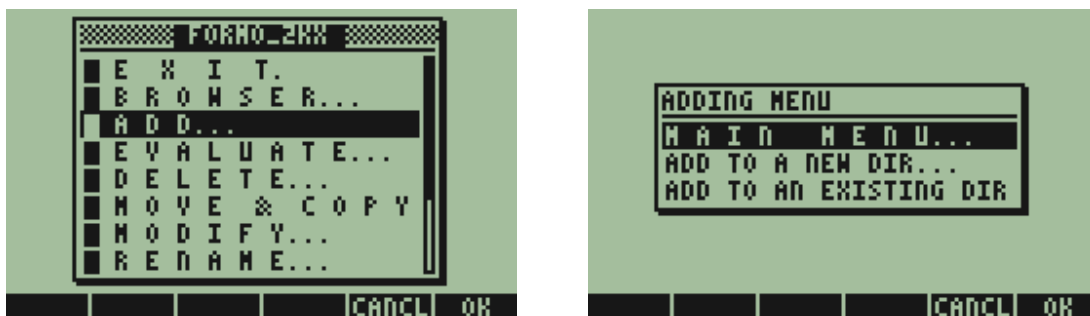


- **Browse directories:** You can only browse your folders, but you can't see what's inside.
- **Browse Formulas:** You can look inside your folders, but you will only see the names of your formulas.
- **Show Formulas:** You are able to see how your formulas are structured.

To navigate within these options you just use the up & down arrows and press ENTER when necessary, to exit please select "MAIN MENU" and press ENTER.

ADDING FORMULAS.

From the main menu of **FORMO_2KX** we have the "ADD" sub-menu, from where you can either add new formulas to an existing directory or create a new one.



Once you have entered the new formula **FORMO_2KX** will check a few internal things like missing the " = " operator, trigonometric functions, etc... and then it will ask you to name this formula. In the mean time it will check for identical names... if there is already a formula with the same name, you will be asked to fix it or re-enter a new name in order to be able to save this formula.

Note: (When naming formulas or folders... just remember names can't have spaces at the beginning or between characters. Also names can not begin with numbers. The same rules apply for directory names)

EVALUATING A FORMULA.

In order to evaluate or execute formulas, you must have at least one directory and one formula saved in it. If you have no formulas or no directories at all **FORMO_2KX** will send you to the main menu, so you can select the third option and start creating some.



Here...Formo will check for trigonometric functions inside the formula before evaluating it, so you can choose whether to work in Radians or Degree mode, after that... all you have to do is input the values for the known variable fields and leave the unknown variable field blank, then place the cursor in the blank field and press [**SOLVE**] to see the result. If the result doesn't fit in the field, you can press [**F5**]**INFO** to see the entire result in a message box.

DELETING FORMULAS AND DIRECTORIES.

Here... you can delete a single formula, a single directory or all of them at the same time. Obviously it is not recommended though unless you already have a backup stored in port 2.



Here you'll be able to delete unwanted formulas or directories off your FORM directory. Note that if you delete something whether a formula or a directory it will only be deleted from the FORM folder, but not from the content of your current backup file stored in port 2, so... if you restore... you will be carrying back everything, even the material you've already deleted, anyway this is the idea of a restoring though. So when deleting formulas you have to be sure the backup you are making at that moment contains the most updated information, so later you won't have to worry about deleting some stuff twice.

MOVING AND COPYING FORMULAS.

Moving and copying formulas is as easy as that...

Here there's the logical procedure... if I'm moving a formula from one folder to another then I select the corresponding options: (*move & copy*) then (*move formulas...*) then go into the corresponding folder, select the desired formula, and finally select the destination folder.



In other words just follow the on-screen instructions and **FORMO_2KX** will do the rest for you. The same logical procedure applies for copying formulas.

Note: (In order to move or copy formulas, you need to have at least two directories and at least one formula saved in each of them.)

MODIFYING A FORMULA.

To modify a formula you must have at least one directory and one formula saved in it. If you have no formulas and no directories at all **FORMO_2KX** will send you to the main menu from where you can create some.



Modifying a formula it's nothing but changing its structure (not its name... for that, we use the rename option.). So Formo will take the formula and put it into the EQW(Equation Writer) Environment, from where you can alter your formula as you want, once you're done with the altering, Formo will check for consistency, file size etc... and finally it will save it under the same name, since we're only modifying the structure not its name.

RENAMING A FORMULA.

The Renaming menu was certainly the most difficult part for me to develop, but it is done and ready to go. This particular piece of code is self-explanatory... so you won't need much of a reading on this one.



Note: (while renaming formulas just remember names can't have spaces at the beginning or between characters. Also names can not begin with numbers. The same rules apply when renaming directories)

ARRANGING FORMULAS & DIRECTORIES.



FORMO_2KX enables you to accommodate your formulas and directories in any way you want, so all you have to do is create a list containing the names of your formulas or directories in the desired order and hit ENTER key. I recommend selecting the variable called "**↑UP**" first, so when you go to inspect your folders manually, you will be able to jump to an upper level with a single key pressing.

Note: (Formo creates the variable called: "**↑UP**" every time the user creates a new folder, the purpose of this var is to go one directory up.)

BACKUP AND RESTORE.

To backup all your formulas, just select the "**BACKUP ALL FORMULAS**" option from the main menu and Formo will do the rest.

Formo will generate a copy of your FORM directory and save it in port 2 for safety, because port 2 is the safest place to store things in hp calculators since the hp49g.

After you have backed up all your formulas, now you can restore them any time you want using the "**RESTORE ALL FORMULAS**" option.

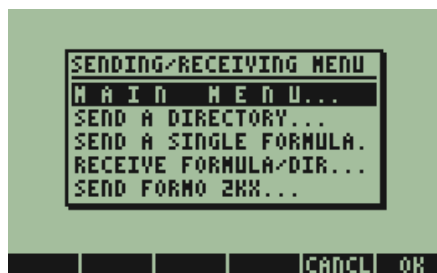


Now to **RESTORE** your formulas... watch it! This one is a little tricky, when restoring from backups you have to be sure the backup you are about to restore contains the right and/or the most updated information, so after the restore you won't be missing formulas or deleting the ones you've deleted last week.

Note: (**FORMO_2KX** will always restore whatever has been backed up in PORT 2 the last time you made a backup, even though this backup contains less or more information than the actual content of the FORM directory. *Be careful!*)

SENDING AND RECEIVING (sharing).

Here you can send or receive a single formula, a whole directory or the main library file (Formo_2KX) to or from another calculator.



OK, here's how it works... Let's say you are the **TRANSMITTER** guy and one of your friends is the **RECEIVER** guy, both have **HP49G+ or HP50G** calculators. Also I assume that both of you have **FORMO V9.75+** or later installed onto your calculators. If so... then just follow these steps:

<u>TRANSMITTER</u> →	→ <u>RECEIVER</u>
1).- Run Formo & Connect both calculators using the <i>calc to calc</i> cable provided.	2).- Run Formo & Connect both calculators using the <i>calc to calc</i> cable provided.
3).- Select the correct FORMULA or the DIRECTORY you want to send, and press the corresponding sending option.	4).- Select the " RECEIVE FORMULA/DIR " option from the main menu, then choose what you want to receive. If it is a formula, please select the destination folder.
5). - Press [ENTER]. & tell other friends about Formo.	6). - Press [ENTER]. & tell other friends about Formo.

SENDING... THE LIBRARY **FORMO_2KX**

All you have to do is follow the on-screen or these steps:

<u>TRANSMITTER</u> →	→ <u>RECEIVER</u>
1).- Run Formo & Connect both calculators using the <i>calc to calc</i> cable provided.	2).- Connect both calculators using the <i>calc to calc</i> cable provided and put the calculator in server mode.
3).- From the main menu select " SHARING " then " SEND FORMO 2kx "	4).- Do nothing, just wait...
5).- Pass Formo to other friends.	6).- Press [CANCEL] when it's done and install it just like any other library. Now repeat step 5.

I dare to say that **FORMO_2KX** is totally harmless to your calculator, I'm sure you will never get the annoying message **"TRY TO RECOVER MEMORY"** unless you are working in very low-battery conditions.

You can checkout some other programs of mine, like: ([LIBKIT V3.1](#) , [RECTA 2003](#)) and more to come in the best **HP CALCULATORS** web page: <http://www.hpcalc.org/>

I created **FORMO_2KX** in order to say thanks to all the people whose written programs have been so useful to me over the years. So I thought... I should do something to thank these people as well as the other people who are interested in programs like this. I really hope this program is helpful to everyone.

SPECIAL GREETINGS:

- Thanks to [Eric Rechlin](#) for maintaining hpcalc.org online. the: [HP Calculators software archive](#).
- Thanks to [Chris](#) for revising the codes, a great designer from Nimlok company (the company I work for in Niles, Illinois).
- Thanks to [Yoann Desir](#) for his Great Support and advises.
- Thanks to [Roger Broncano Reyes](#) for all his support and his great program [HPUserEditV4.0](#)
- Thanks to all the people who sent me E-mails, letting me know about their needs, suggestions & bugs in previous versions of **FORMO**.

I apologize for my bad English but, I'm not a native English speaker.

HP CALCS RULE!!!