

HP Prime Toolbox Manual

by Noah Wagner

How to start:

1. Click „Run“ on your Prime.

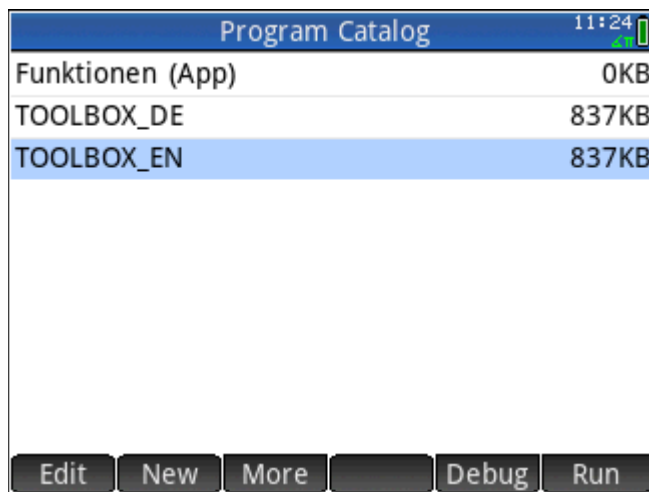


Figure 1: Start

2. Select „TOOLBOX_EN“.

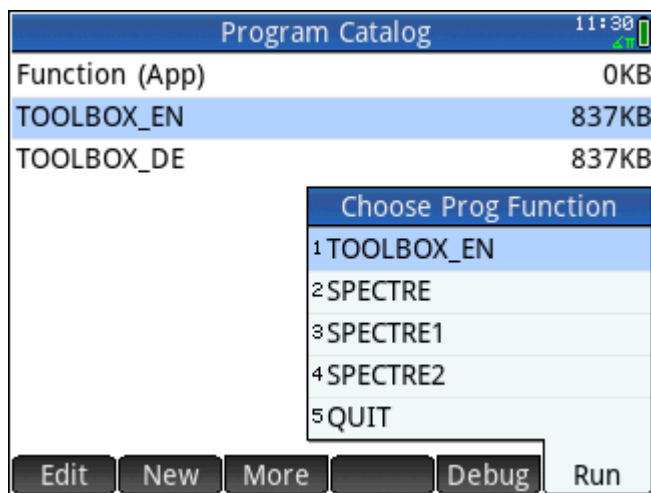


Figure 2: Choose Program Function

3. Select what you want to do.

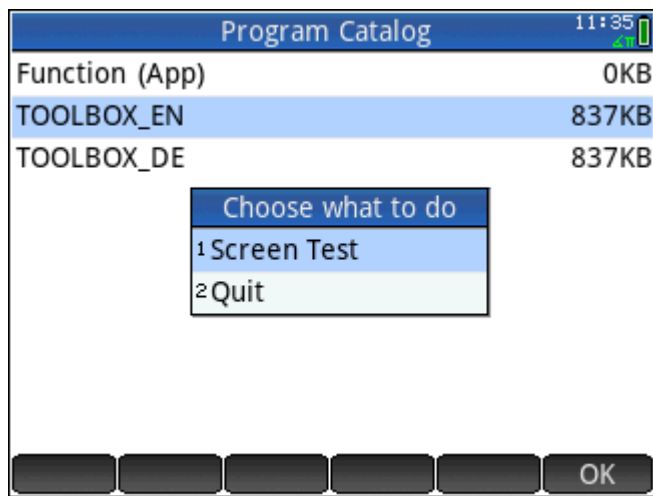


Figure 3: Choose what to do

4. „Screen Test“ or „Quit“

4.1.1 Choose „Screen Test“

4.1.2 Then you can choose which screen Test do you like.

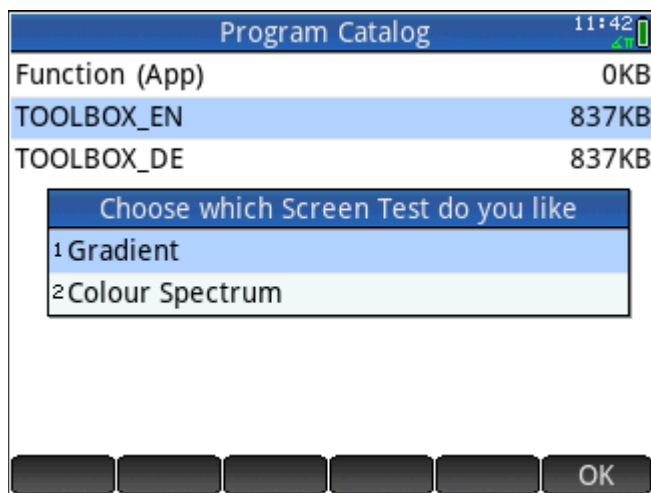


Figure 4: Choose Screen Test

4.1.2.1 If you have chosen „Gradient“ you will see this:



Figure 5: Gradient

4.1.2.2 But if you have chosen „Colour Spectrum“ you will see this:

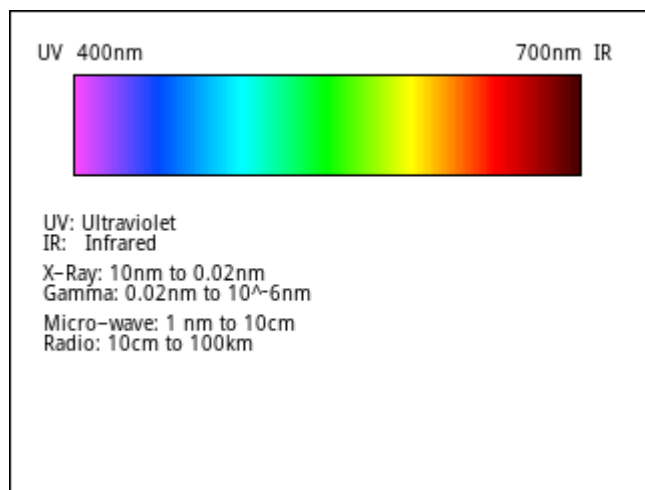


Figure 6: Colour Spectrum

4.1.3 After that you will be redirected to the first menu (step 3).

4.2.1 If you've selected „Quit“ you see this screen:

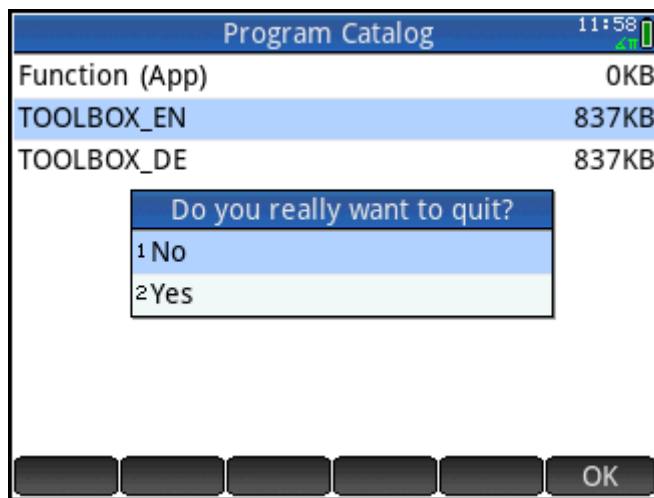


Figure 7: Quit?

4.2.1.1 If you choose „No“ you will be redirected to the first menu (step 3).

4.2.1.2 If you choose „Yes“ the program will be closed.

HP Prime Toolbox Program

Features:

- „Screen Test
- „Quit“ Function
- Multilingual

Credits:

- [SPECTRE1](#) | [Joseph K. Horn](#)
- [SPECTRE2](#) | [Mickaël Nicotera](#)
- Other Modules by Noah Wagner

Support:

Current version: 1.0 (First stadium) - 01.07.2014

Website: <http://www.noahwagner.de/prime>

Program-Download-Link:

Size on Calculator: 840 KB

Sourcecode: source_EN.txt

Manual updated: 01.07.2014

Program updated: 01.07.2014